

Facility: **Legacy Athletics**

Last Updated: **May 19, 2026**  
Who: **MM**

Address: **9748 12 Ave SW**

Contact/Caretaker: Legacy Athletics Staff

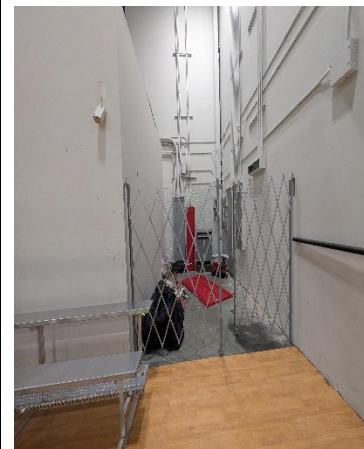
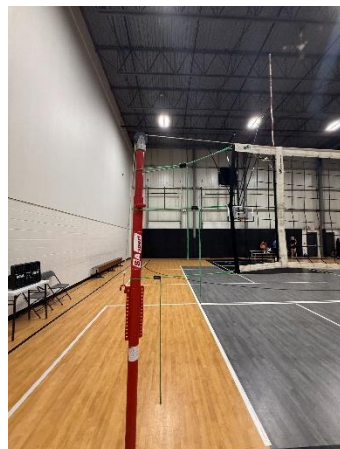


Photo #1

Photo #2

Photo #3

Photo #4

## General Information

**Parking:** Players can park in the main parking lot on the North-West side of the facility.

**Entrance:** Players can enter through the front doors of the facility.

**Gym Location:** The courts can be found by continuing straight upon entry to the facility

**Floor:** Floors are a composite material white lines for indoor volleyball.

**Washrooms:** Entrances to the washrooms can be found well marked within the court area of the facility

## Equipment:

**Sport Specific Equipment Location and details:** The nets and poles can be found in the caged off area behind Court #2 pictured in Photo 1. Please ensure that if a game is underway on Court #2, that you bring the equipment across quickly and during a stoppage of play in order to not impede with other games. If your game is taking place on courts 3,4,5,6 your equipment can be found in the far corner by court 3 pictured in photo 4. If the fence is locked, please speak with a staff member on site to have them unlock it for you.

## Gym Set-up

### Volleyball:

The volleyball courts are setup in this facility 1:1 on the basketball courts, two basketball courts will be reserved by the ESSC for each booking in order to accommodate for two volleyball courts.



- Step 1: Setup poles into the proper holes. The holes have a gold cover. Make sure you have 1 pole with a crank and 1 pole without a crank for each court.
- Step 2: Make sure poles are set to the proper height. They should be set to Men's height (2.43 meters).
- Step 3: Attach the top of the net to the poles, by putting the rope over the pulley and attaching one side to the crank and the other side to the pole.
- Step 4: Attach the bottom of the nets to each pole. Tighten with the crank.
- Step 5: Be very careful to not overtighten nets.

## Important Notes

## Set Up Diagram

