

Facility: **St. FX Sports Centre**

Last Updated: **Aug 6, 2025**
Who: **BS**

Address: **9240 163 St**

Contact/Caretaker: **City of Edmonton**



Entire tri-gym



Divider curtain



Basketball hoop



Volleyball posts

General Information

Parking: Players can park in the main lot on the South side of the building. This can be accessed off 163 St. This lot is shared with the Jasper Place Leisure Centre.

Entrance: Players should enter from the main entrance on the South side of the building. Players should take off outdoor footwear at the entrance.

Gym Location: Inside the entrance turn left and follow along the main hallway.

Change room/Washroom: Players can change in the washrooms that are located outside the doors to gym 2 and 3. Please do not change in the hallway. Players should use the free lockers in the changeroom to store their things. Please do not leave items along the glass outside the gym.

Floor: The floor should be cleaned by the facility staff. If there are any issues please notify the front desk.

Equipment

Sport Specific Equipment Location and details: The soccer nets and volleyball equipment are in the storage room on the North side of gym 2. Please use the soccer goals provided by St. FX. Volleyball nets and red poles are found in the red rolling carts in the gym storage room. Volleyball nets need to be folded and placed in the holder when putting away. **DO NOT** roll up nets. Badminton nets are found in the black bin at the back of the storage room. There are blue poles lined up to the right of the storage room.

Gym Set-up

Volleyball

Step 1: These posts only have top cables and use hooks and string tie downs to keep the nets tight. Make sure you have one post with a crank and one post with a crank and hook for each court.

Step 2: Place the posts in the ground and then run the cable over the pulley and hook on one side. On the other side, put the net cable over the pulley and attach to the crank.

Step 3: Attach the bottom of the nets to the posts using the ropes.

Step 4: Crank the cables tight and then use the green strings to pull the bottom of the nets tight.

Step 5: Repeat steps 2-4 for the opposite court.

Basketball

This gym has break-away rims and regulation sized glass backboards. There is a 3pt line.

Court Lines: Blue basketball court lines easily identifiable in this gym.

Player Benches: Players can sit on the large benches against any wall, outside of the area of play.



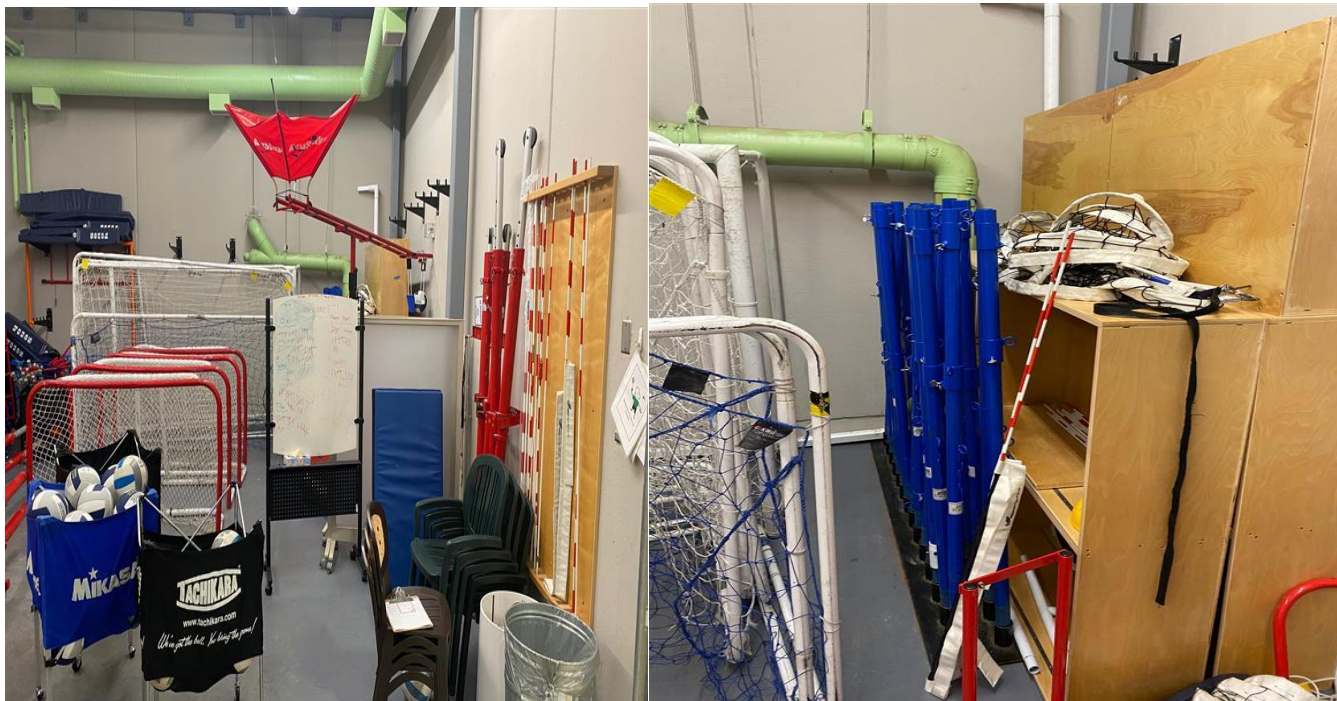
www.EdmontonSportsClub.com
17406 106a Ave, Edmonton, AB, T5S 1E6
780.429.GAME(4263)

Soccer

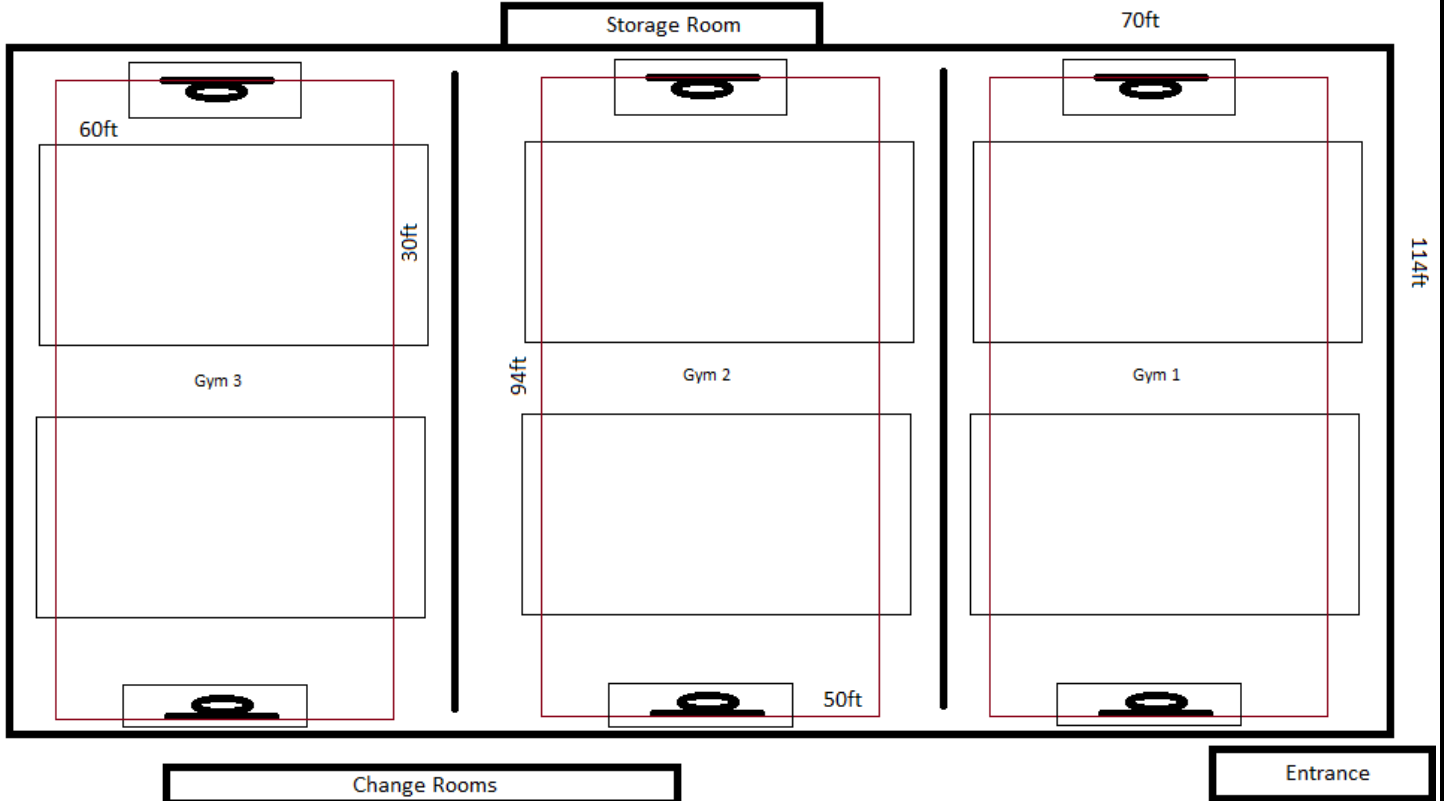
Goals: Use the soccer nets that are supplied by St. FX. These will be in the storage room.

Pickleball/Badminton

- 1: Equipment is in equipment room behind court 2/3.
- 2: Need a worker's key/badge to get into equipment room.
- 3: Pickleball/Badminton Poles are blue and should be immediately to the right when entering room.
- 4: Nets are found in the black bin at the back of the storage room



Set-up Diagram



Important Notes

Please make sure to have your permit printed and obey any requests from the St. FX staff.