

COVID-19 PROTOCOL

SPORTS TC – Phillet Indoor Training Facility

This document is prepared following the “Covid-19 Information GUIDANCE FOR SPORT, PHYSICAL ACTIVITY AND RECREATION – STAGE 2” released by the Government (Updated: September 3, 2020), which can be found in full at alberta.ca/BizConnect

Updated: September 17th, 2020

SPORTS TC apologizes in advance to any players or other attendees for inconveniences caused by our new COVID-19 Protocol. We thank you for your patience and understanding as we do our best to make the safest possible environment for all, so as to ensure that the soccer indoor season can continue, and facilities can continue to remain open.

Overview

Under current CMOH Orders, businesses such as SPORTS TC are required to:

- implement practices to minimize the risk of transmission of infection among attendees;
- provide procedures for rapid response if an attendee develops symptoms of illness;
- ensure that attendees maintain high levels of sanitation and personal hygiene;
- comply, to the extent possible, with the COVID-19 General Relaunch Guidance and any other applicable Alberta Health guidance found at: alberta.ca/biz-connect.aspx.

In this document, “attendees” includes participants, staff, volunteers and, where relevant, members of the general public.

In addition to following the Government of Alberta’s guidance, SPORTS TC is following recommendations from the Canadian Soccer Association and the Alberta Soccer Association to help Clubs, Teams, and Players, to meet or exceed guidelines from these soccer government bodies.

Youth & Adult SPORTS TC Visitor Protocols

1. SPORTS TC requests that whenever possible players, coaches and managers do not enter the facility until 10 minutes before their session time, remaining in their car until it is time to enter the facility.
2. There will be no spectators admitted into SPORTS TC, aside from team officials, managers, and players. SPORTS TC recommends that parents/guardians drop off their players who are minors and pick them up afterwards.

COVID-19 PROTOCOL

SPORTS TC – Phillet Indoor Training Facility

3. Anyone exhibiting COVID-19 symptoms must stay home and may not enter SPORTS TC until proper assessment by health authorities clears individual.
4. Everyone entering SPORTS TC is required to wear a mask, including players, when they enter the facility. If anyone forgets their mask, disposable masks are available to be provided to them. Players must remain masked until they enter the turf area. Any time they exit the field, players must put their mask back on.
5. Players may decide to bring water bottles to the property, but all bottles must be labeled with the name of the player. This applies also to team officials and managers who decide to bring water bottles to the sessions.
6. SPORTS TC highly recommends that players bring to the session the minimum possible gear and accessories (i.e. Water bottle, turf or running shoes, shin guards, winter jacket).
7. The COVID-19 screening form prepared by SPORTS TC must be completed by every individual (not only players) prior to entering the facility. The form will be available at the SPORTS TC website (www.SPORTS TC.com) and we recommend printing it, signing it, and bringing it when individuals come to SPORTS TC to speed up the process of entry to the field. SPORTS TC will have available printed forms at the facility. SPORTS TC will store all forms for 14 days as recommended by Alberta Health for potential contact tracing purposes, after which they will be destroyed. Every visitor must complete this form, every time he/she visits SPORTS TC for sessions.
8. Upon arrival, at the Sign marked #1, everybody, without exceptions, must sanitizer their hands using the hand sanitizer provided by SPORTS TC.
9. After the sanitation station, at the Sign marked #2, every visitor must hand in their COVID-19 screening form or fill out a printed form offered there by SPORTS TC to hand in.
10. After filling out the form, players will stand in line—on the lines on the floor marking social distancing—waiting for their turn to get access the turf area, waiting at the Sign marked #3 in front of the door that gives access to the main warehouse, the turf area and corridor. No one must enter the turf area while the current session is in progress. Players, coaches, etc. must all wait in this area until the previous session has ended and all players from that session have exited through the back door off the field. Not entering the field area until the previous group has left is required in order to maintain separation of cohorts.
11. When more than one cohort is to enter the field at the same booking time, staff will direct the group to enter the furthest field away to enter first, after which the next group will enter. Please be patient with this procedure and ensure your masks remain in place, so as to maintain separation between cohorts. Dividers will be lowered to separate each field area booked by a different group so as to ensure proper separation of groups.

COVID-19 PROTOCOL

SPORTS TC – Phillet Indoor Training Facility

12. Nobody with dirty shoes (i.e. Snow, mud, etc.) will have access to the turf. SPORTS TC will facilitate sanitized seating areas in the corridor next to the turf for players to change to their clean turf or running shoes for the session on turf.
13. Players are to enter through the main entrance, through the lobby, and exit through the back door of the building located at the south side of the property. Find the big EXIT sign at the corresponding back door.
14. People who are in the lobby may use the washrooms located in the lobby. Once inside the turf field area, do not return to the lobby so as not to mix with the next group who may be getting ready to enter. Once players, coaches, and spectators have entered the field area, they may use the washroom that is inside the field area. Only facility staff, wearing a mask, may go back and forth between the field and the lobby.
15. Players must respect physical distance guidelines, including guidelines from SPORTS TC's facility attendants.
16. Cohorted teams will be able to share equipment in small groups. All the equipment must be sanitized after use.
17. All equipment will be sanitized between groups. All high-touch areas, including door handles and bathroom surfaces will be sanitized regularly and between groups.
18. Anybody who spits inside of SPORTS TC (including gum), accidentally or intentionally will be asked to leave the property immediately. This includes on the turf, or in any other space area at SPORTS TC.
19. All the groups must proceed to leave the turf 5 minutes before their booking/session ends. Five minutes before the end of the session, the group must proceed to take all their belongings and equipment, and start walking towards the south side of the property, to exit through the back door with the sign EXIT. Visitors must inform the person who drove the participant to SPORTS TC of the location of the pickup zone.

For more information and questions:

- info@SPORTS TC.com
- armando@SPORTS TC.com
- Call, txt, and WhatsApp: (780) 203 – 4121

www.SPORTS TC.com

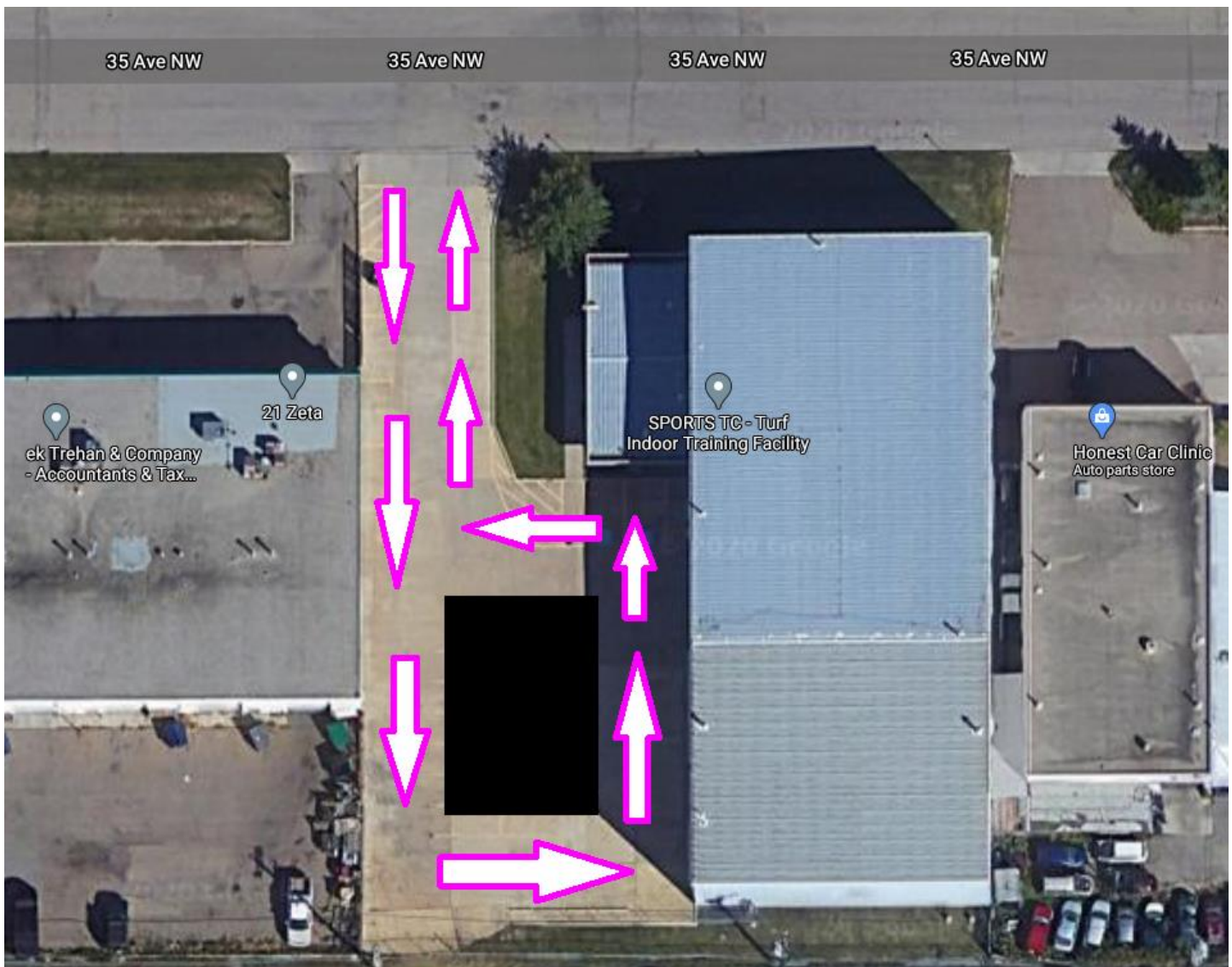
COVID-19 PROTOCOL

SPORTS TC – Phillet Indoor Training Facility

The images below illustrate guidelines for traffic circulation for drop off and pickup of players within the parking lot, as well as the entrance and exit doors, and areas for parking. (These guidelines are in place during the prime-time rentals where the number of people attending the facility is higher.) During Prime Time, please do not park in the central area of the parking lot as this area will be needed for traffic circulation for drop off and pickup.

Adult players practicing after 8:30PM only may refer to the final illustration only and may park in the central area of the parking lot.

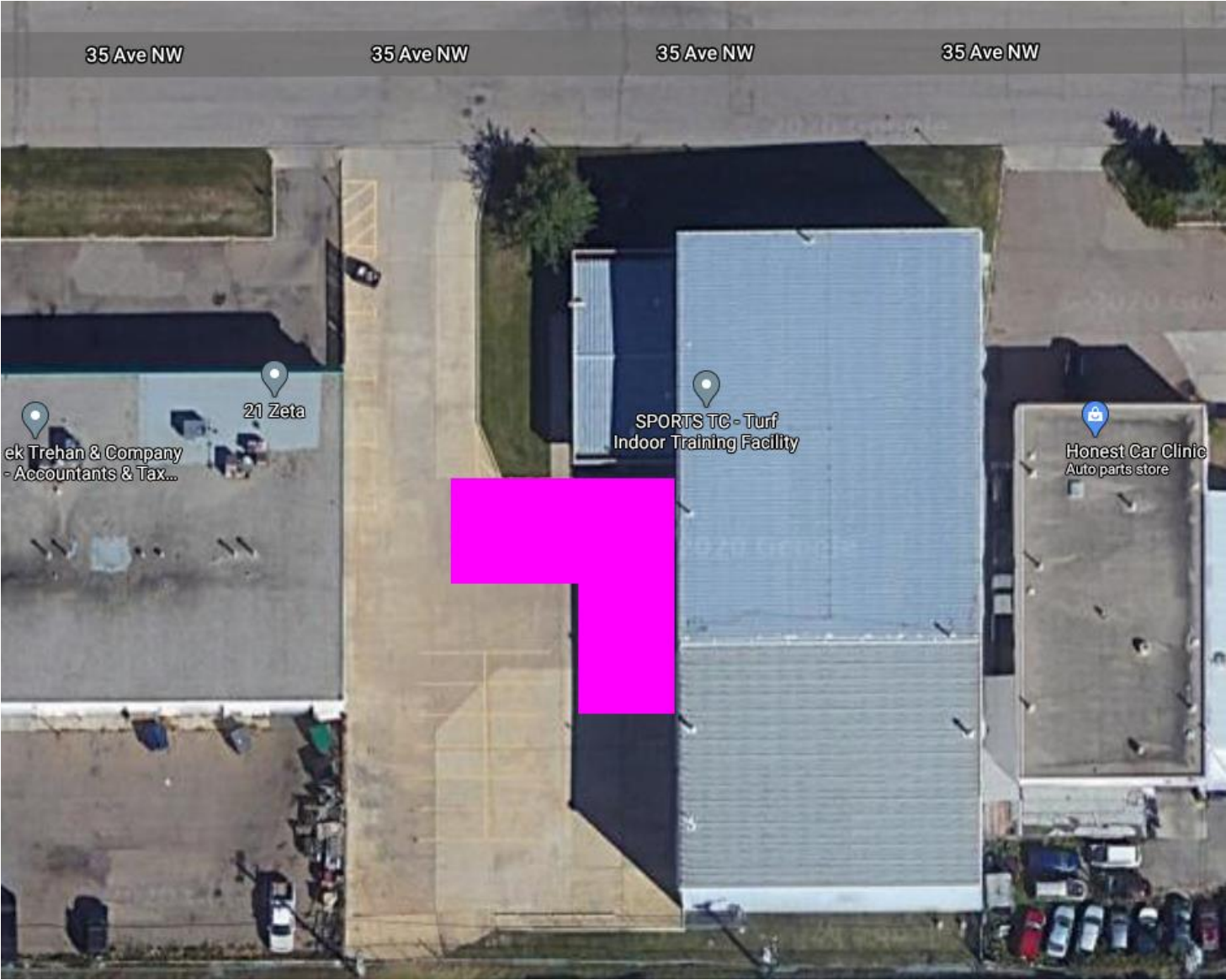
Direction of flow of traffic for drop off and pick up:



COVID-19 PROTOCOL

SPORTS TC – Phillet Indoor Training Facility

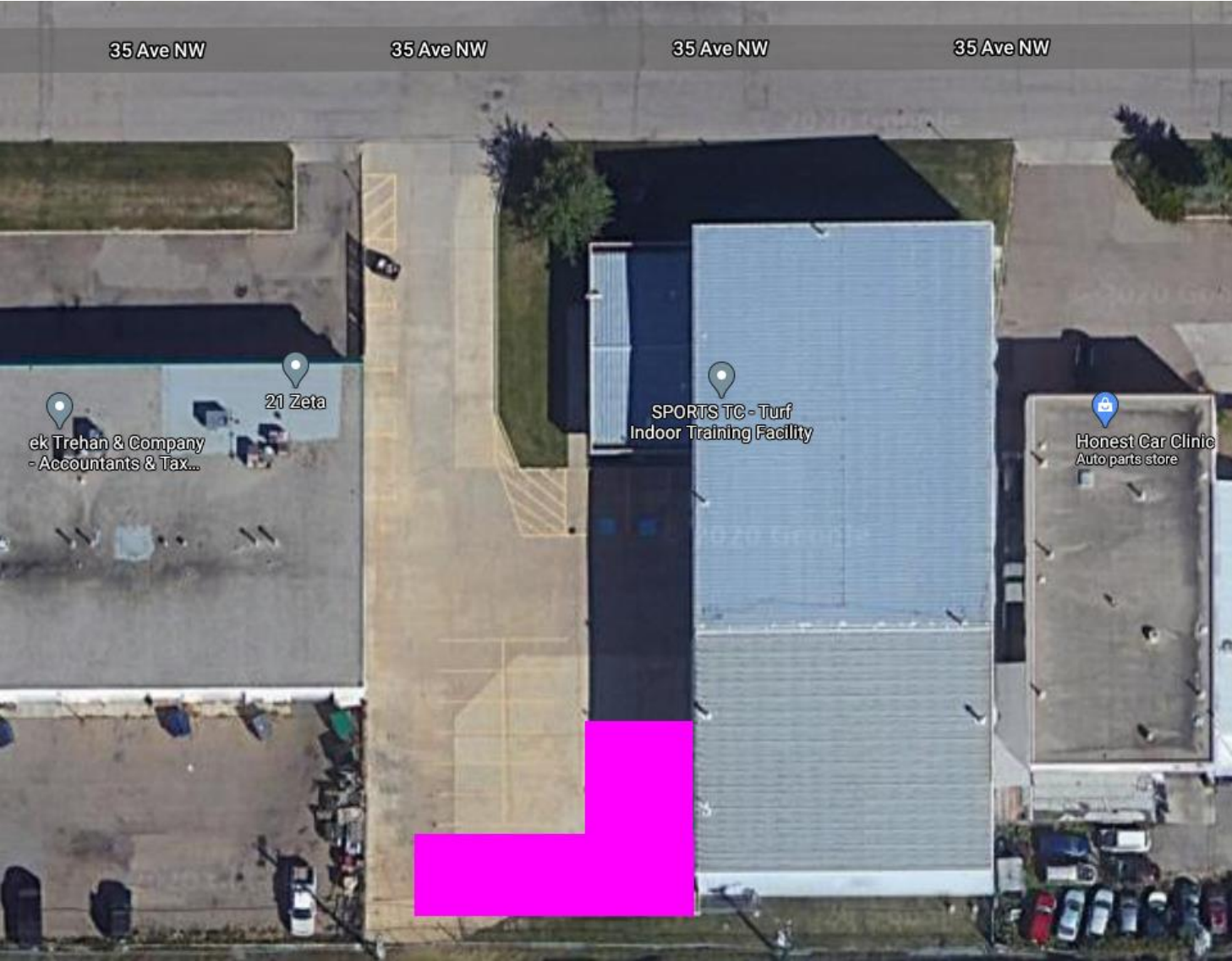
Entrance to the building and designated area for player drop-off:



COVID-19 PROTOCOL

SPORTS TC – Phillet Indoor Training Facility

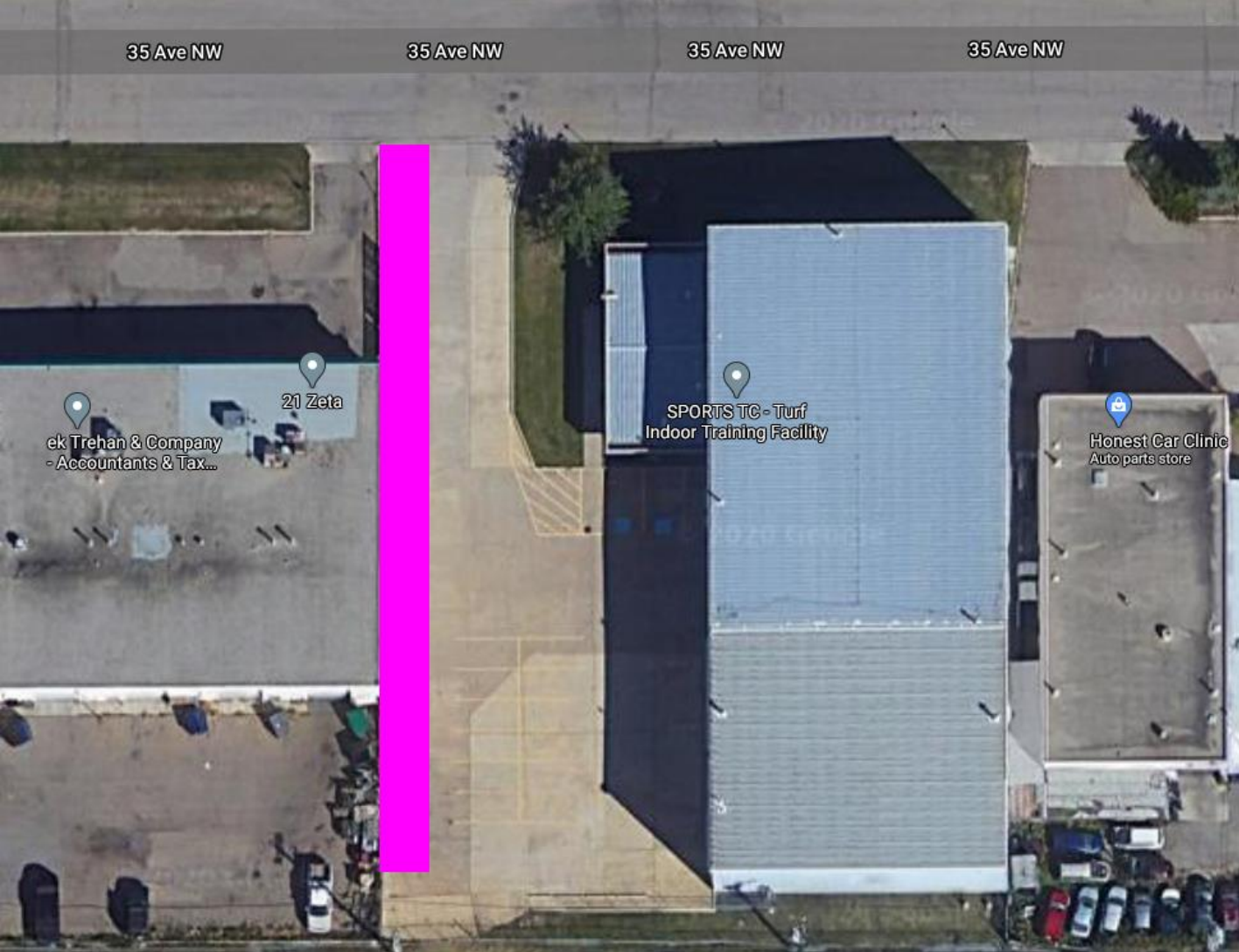
Exit from the building and area players can wait to be picked up:



COVID-19 PROTOCOL

SPORTS TC – Phillet Indoor Training Facility

Parallel parking permitted here:



COVID-19 PROTOCOL

SPORTS TC – Phillet Indoor Training Facility

Additional suggested areas for parking:



COVID-19 PROTOCOL

SPORTS TC – Phillet Indoor Training Facility

After 8:30PM the parking lot may be used with the normal lines for stalls:



Thank you for your assistance in following these guidelines. These are difficult times for all, and we appreciate any suggestions you may have for improving the safety and easy flow of our patrons within the SPORTS TC Indoor Training Centre. Please send suggestions or comments to info@SPORTS TC.com